

COMUNE DI MONTEU DA PO  
PROVINCIA DI TORINO

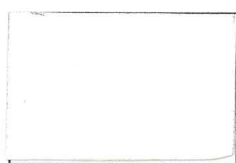


**REGOLAMENTO DEL  
COLORE**

**CAMPIONI COLORE**

A garanzia della giusta tonalità si consiglia di prendere visione della tabella originale depositata presso gli uffici comunali, oppure depositare la campionatura da approvare con la domanda.

# MURATURE



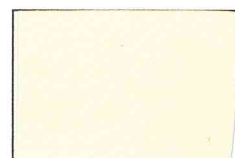
001



002



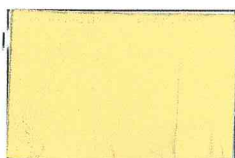
003



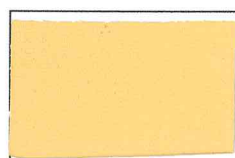
004



005



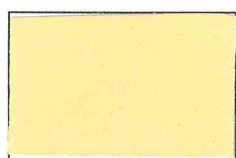
006



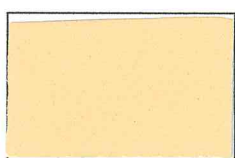
007



008



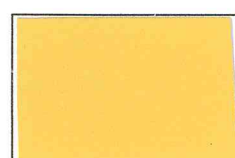
009



010



011



012



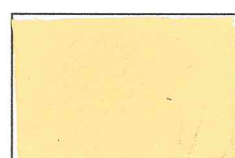
013



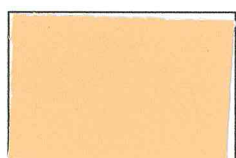
014



015



016



017



018



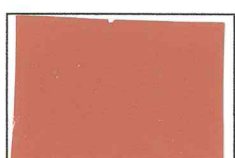
019



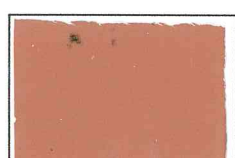
020



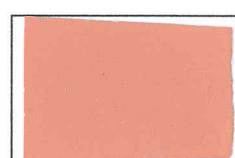
021



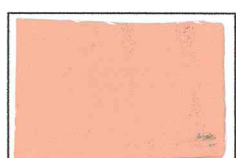
022



023



024



025



026



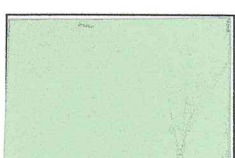
027



028



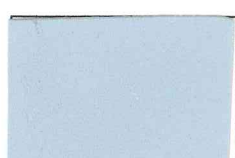
029



030

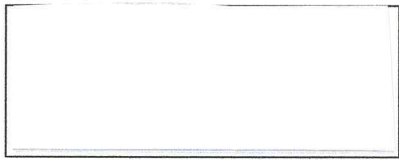


031



032

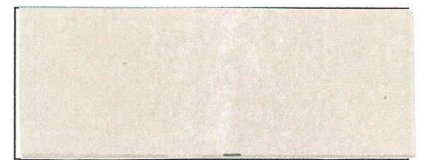
## SERRAMENTI E MANUFATTI METALLICI



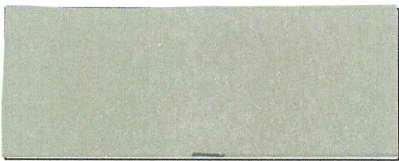
101



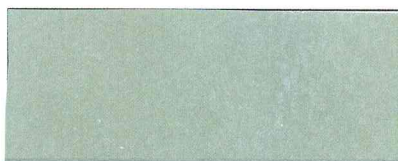
102



103



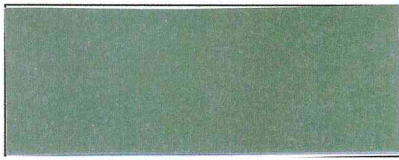
104



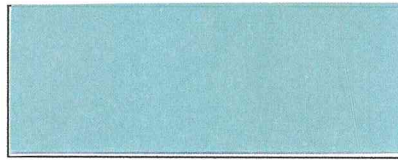
105



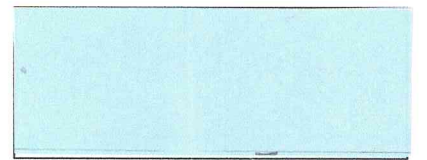
106



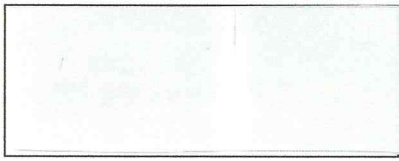
107



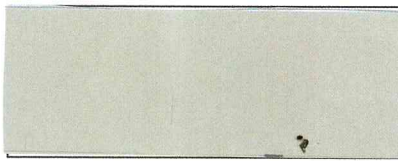
108



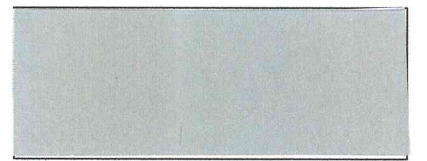
109



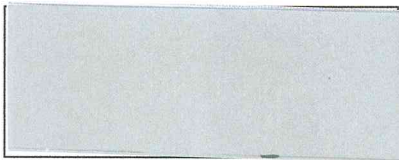
110



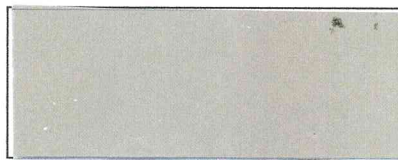
111



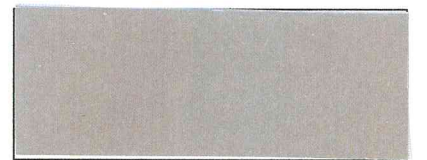
112



113



114



115



116



117



118